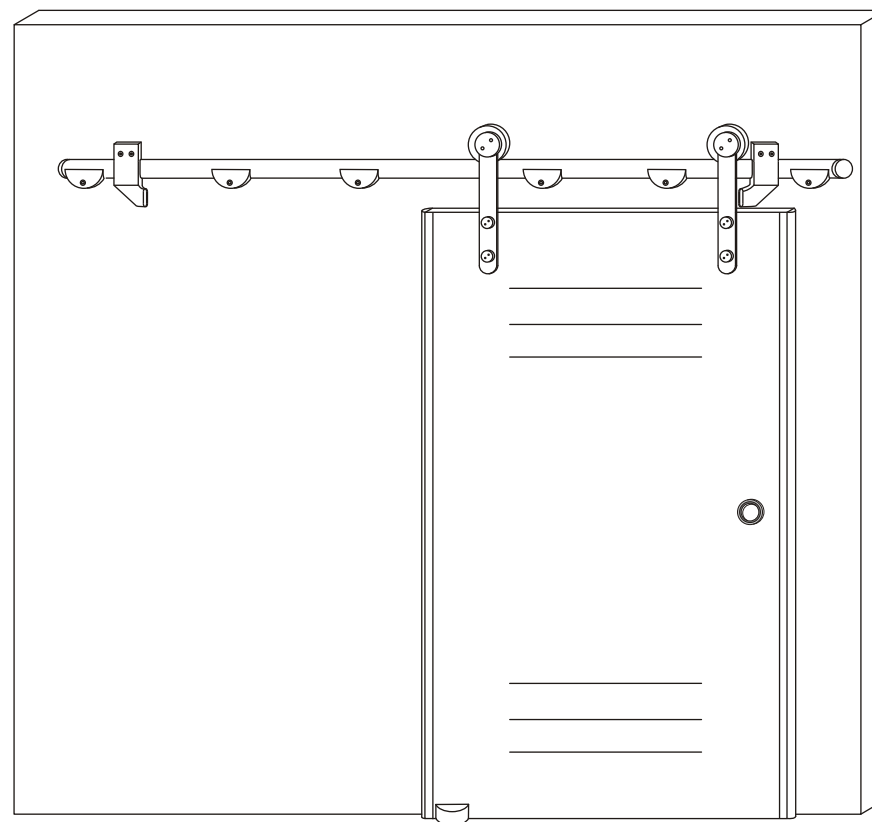


INSTALLATION MANUAL

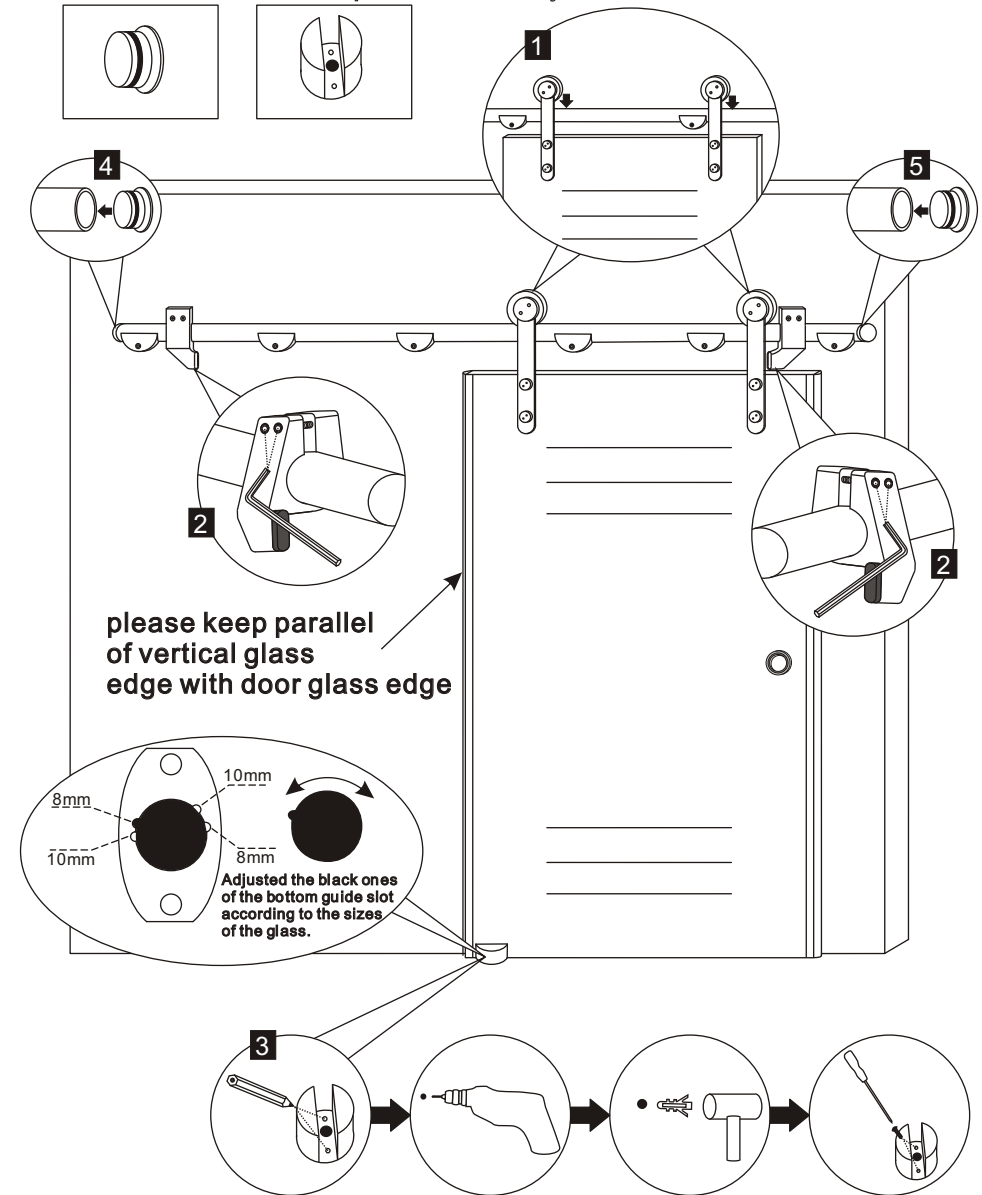


20801/20803/20806

RoHS  **ISO9001:2000**

1. Place the glass door and install the round tube
2. Adjust the position of anti-collision block and fixed with allen wrench.
3. Placed the door guide groove, fixed the position, make a mark by pencil, insert the expansion tube then tighten the screws
4. Install the round tube decoration.

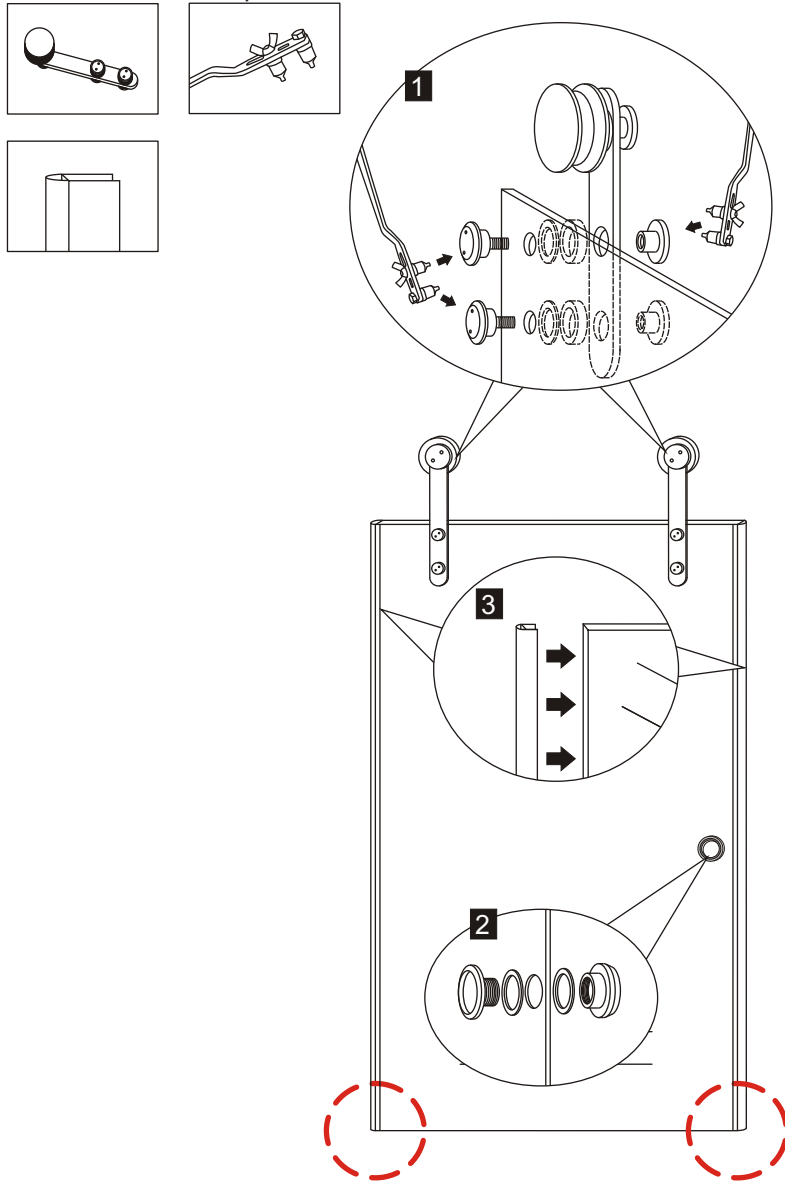
Attention: Do not use any corrosion liquid to clean the aluminum and other metal parts when daily maintenance.



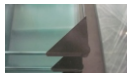
1.Install the sliding wheel ,adjust the position by allen wrench.

2.Install the handle

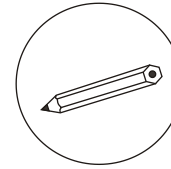
3.Install the waterproof.



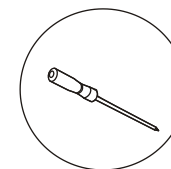
Attention: Do not remove the Black corner protector until insert well the glass into the wall profiles and fit well to prevent glass broken and splitted.



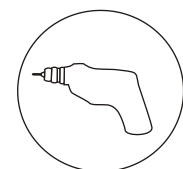
TOOL PICTURE



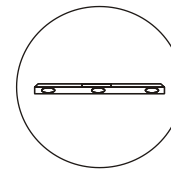
Pencil



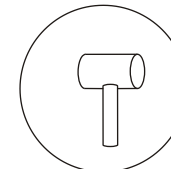
Cross screw driver



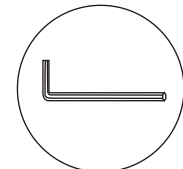
Drill machine



Level ruler

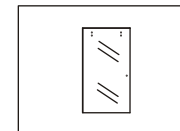


Rubber hammer

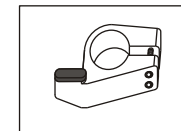


Allen wrench
(In the package)

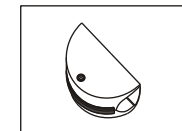
Accessory list



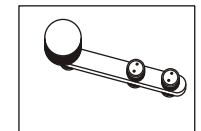
Glass



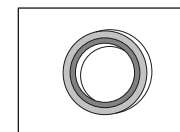
PJ-4049



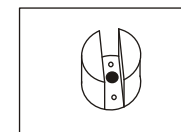
PJ-4048



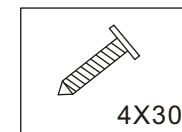
PJ-4047



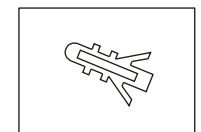
LS-1024



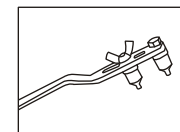
PJ-4045



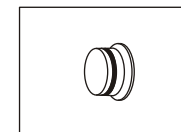
Screw
4X30



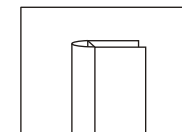
Expand tube



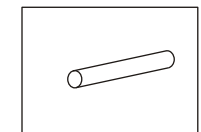
PJ-4413



PJ-4046

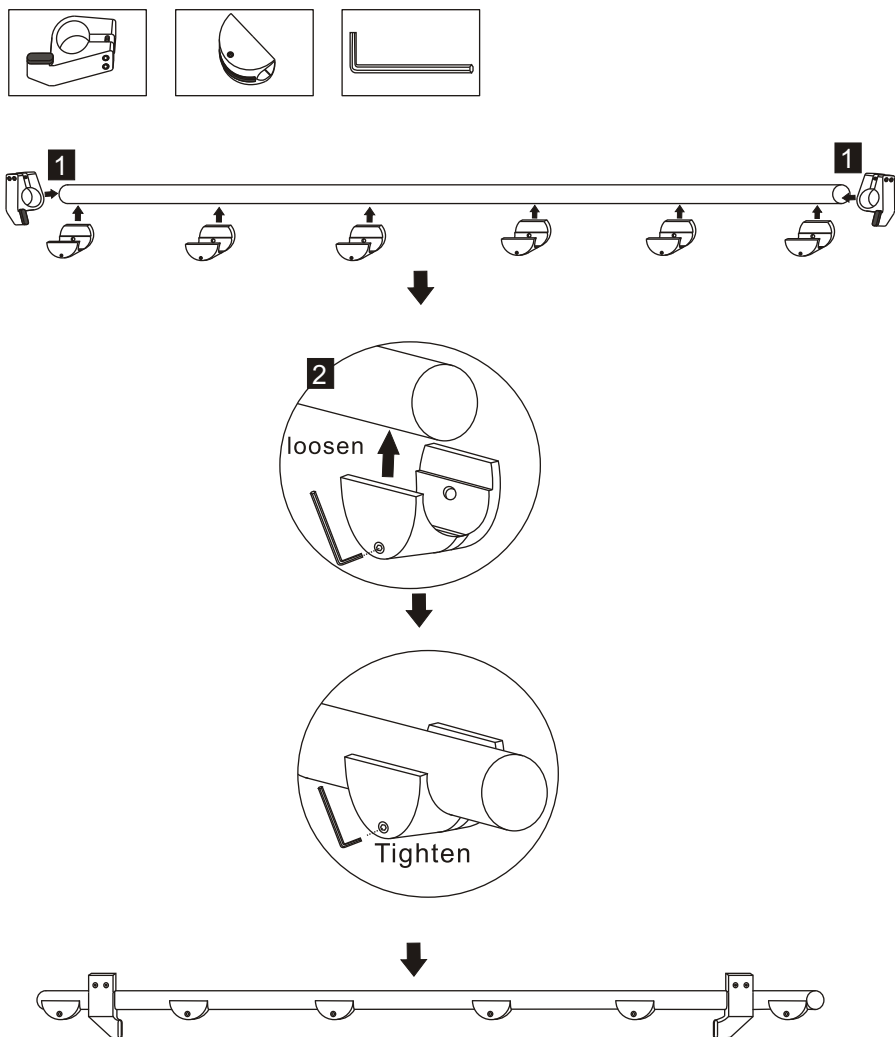


CT-8DSTC



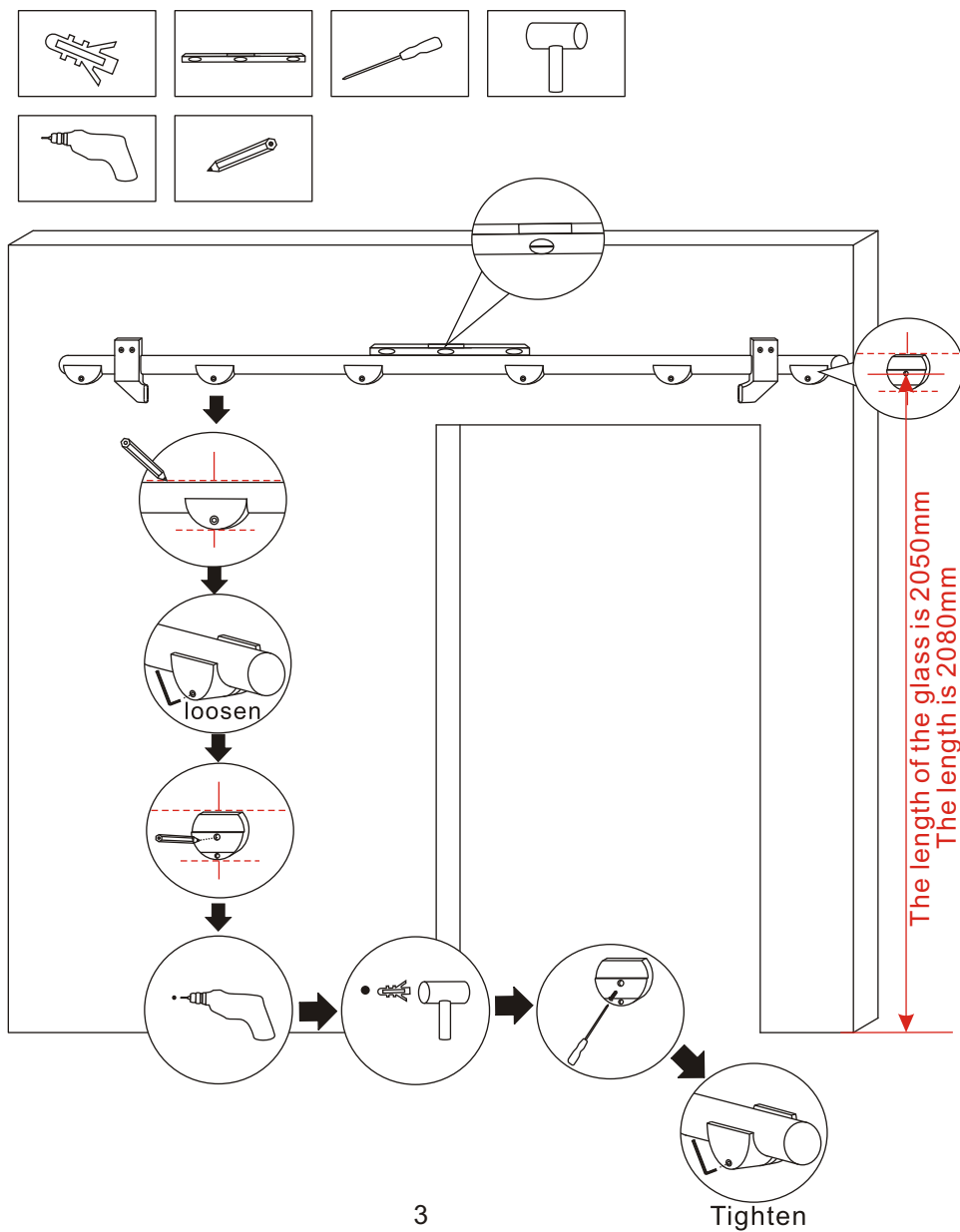
round aluminum profile

1. Install the anti-collision block into the round tube.
2. loosen the wall clip, insert the round tube, and tighten the wall clip.
3. The distance between the fixed blocks is equal, the two fixed block must flat to round tube head



2

1. Place the round tube, use lever ruler flat and vertical to the wall.
2. As the picture show, draw the line by pencil.
3. loosen the wall clip, make a mark on the middle position.
4. Drill hole on the middle position, insert the expansion tube then tighten the screws
5. Place the round tube into wall clip and fixed by allen wrench



3